

**FOR  
LEASE**

## SMALL OFFICE SPACES FOR LEASE

1085-1095 N. MAIN ST, ORANGE, CA 92867 ±484 - 3,000 SF



### PROPERTY HIGHLIGHTS

- **NEW OWNERSHIP!**
- **Newly Renovated Office Suites**
- ±484 - 3,000 SF Spaces Available
- Office suites can be expanded
- Great Small Office Suites
- Aggressive Lease Rates and Terms
- Excellent Access to Freeways 5, 57, 22
- Close Proximity to Angel Stadium & Honda Center
- Main Street Frontage
- Amenities Close By: Restaurants, Transportation Hub, Movie Theaters, Hotels, and Banks



[my.leeorange.net/1085-1095-n-main-st-lease](http://my.leeorange.net/1085-1095-n-main-st-lease)

#### ALLEN C. BUCHANAN

Principal  
714.564.7104  
abuchanan@lee-associates.com  
CalBRE #00870947

#### JOSHUA K. HARPER

Marketing Associate  
714.564.7116  
jharper@lee-associates.com  
BRE #01956294



COMMERCIAL REAL ESTATE SERVICES  
BRE # 01011260  
1004 West Taft Avenue, Suite 150  
Orange, CA 92865  
LeeOrange.com

# FOR LEASE

## SMALL OFFICE SPACES FOR LEASE

1085-1095 N. MAIN ST, ORANGE, CA 92867 ±484 - 3,000 SF

**Lease Rate:** TBD **Total Space** ±484 - 1,430 SF  
**Lease Type:** Gross **Lease Term:** 1-3 years

SPACE	SUITE	SPACE USE	LEASE RATE	LEASE TYPE	SIZE (SF)	TERM	COMMENTS
1085 N. Main St	M	Office Building	TBD	Gross	±611 SF	Negotiable	1 private and open office area.
1085 N. Main St	P	Office Building	TBD	Gross	±484 SF	Negotiable	1 private and open office area.
1095 N. Main St	B	Office Building	TBD	Gross	±1,367 SF	Negotiable	3 privates and in suite restroom
1095 N. Main St	C&H	Office Building	TBD	Gross	±1,430 SF	Negotiable	2 private offices, reception, and open office area
1095 N. Main St	K	Office Building	TBD	Gross	±722 SF	Negotiable	Open office area
1095 N. Main St	L	Office Building	TBD	Gross	±1,093 SF	Negotiable	3 privates and reception area
1095 N. Main St	M-1	Office Building	TBD	Gross	±1,027 SF	Negotiable	2 privates, break room, and open office area
1095 N. Main St	N	Office Building	TBD	Gross	±797 SF	Negotiable	2 privates and open office area
1095 N. Main St	R	Office Building	TBD	Gross	±1,200 SF	Negotiable	5 privates and reception area

[my.leeorange.net/1085-1095-n-main-st-lease](http://my.leeorange.net/1085-1095-n-main-st-lease)

**ALLEN C. BUCHANAN**  
Principal  
714.564.7104  
abuchanan@lee-associates.com  
CalBRE #00870947

**JOSHUA K. HARPER**  
Marketing Associate  
714.564.7116  
jharper@lee-associates.com  
BRE #01956294

 **LEE & ASSOCIATES**  
COMMERCIAL REAL ESTATE SERVICES  
BRE # 01011260  
1004 West Taft Avenue, Suite 150  
Orange, CA 92865  
LeeOrange.com

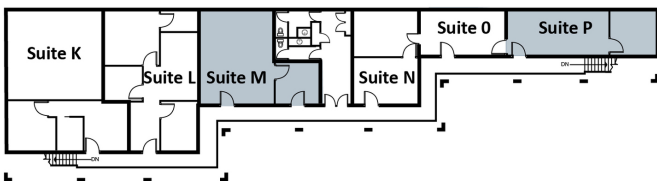
All information contained herein has been provided by Lessor and/or third parties, but has not been independently verified by Lee & Associates or its agent(s). Lessee and interested parties should independently verify all information communicated by these sources.

# FOR LEASE

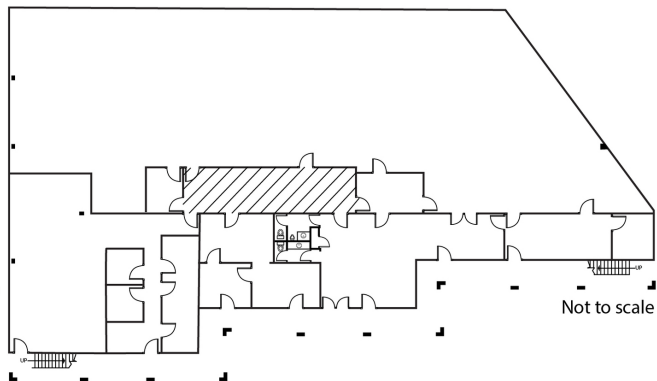
## SMALL OFFICE SPACES FOR LEASE

1085-1095 N. MAIN ST, ORANGE, CA 92867 ±484 - 3,000 SF

### UPPER LEVEL

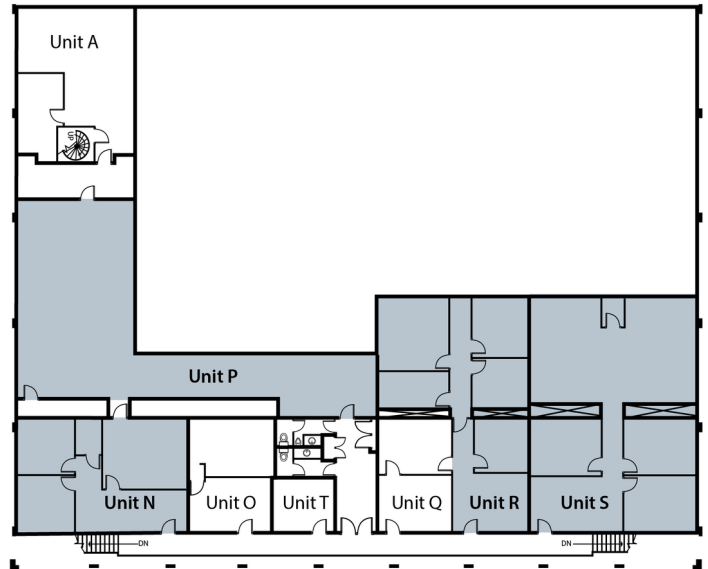


### LOWER LEVEL

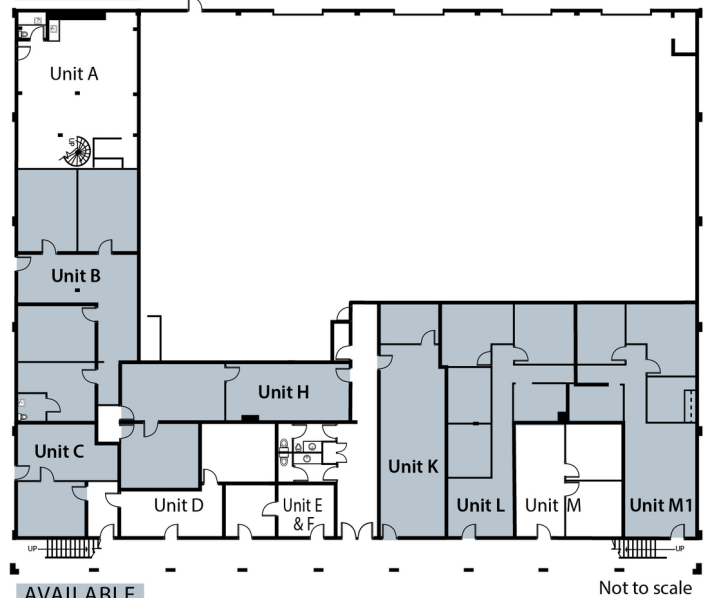


AVAILABLE

### UPPER LEVEL



### LOWER LEVEL



AVAILABLE

MAIN STREET

1

1085 N. MAIN

Floor Plan Information

**ALLEN C. BUCHANAN**

Principal  
714.564.7104  
abuchanan@lee-associates.com  
CalBRE #00870947

**JOSHUA K. HARPER**

Marketing Associate  
714.564.7116  
jharper@lee-associates.com  
BRE #01956294

2

1095 N. MAIN

Floor Plan Information

[my.leeorange.net/1085-1095-n-main-st-lease](http://my.leeorange.net/1085-1095-n-main-st-lease)

**LEE & ASSOCIATES**

COMMERCIAL REAL ESTATE SERVICES  
BRE # 01011260  
1004 West Taft Avenue, Suite 150  
Orange, CA 92865  
LeeOrange.com